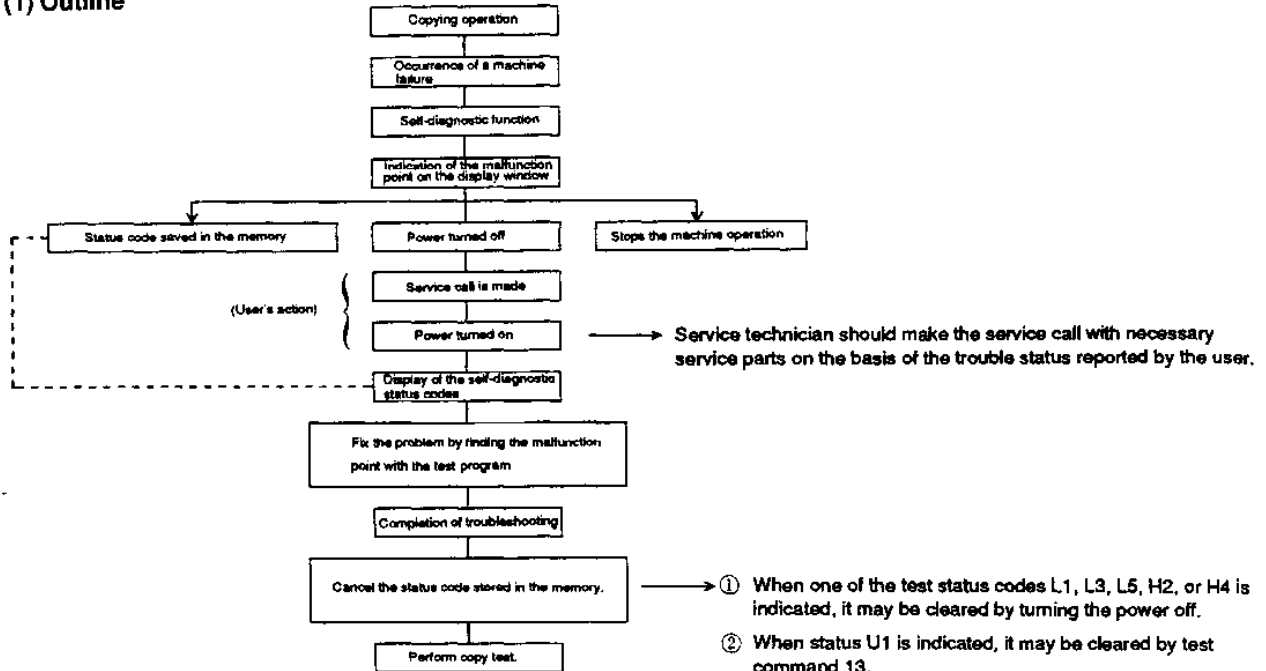


**4. Self-diagnostic functions**

When the copier malfunctions, operations are suspended immediately and a status code is indicated on the multicopy number display. Status codes are represented as an alphanumeric combination of figures.

**(1) Outline**



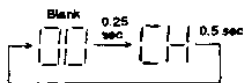
Service technician should make the service call with necessary service parts on the basis of the trouble status reported by the user.

- ① When one of the test status codes L1, L3, L5, H2, or H4 is indicated, it may be cleared by turning the power off.
- ② When status U1 is indicated, it may be cleared by test command 13.
- ③ When status code CH or PC is indicated, it may be cleared automatically upon completion of troubleshooting, without entering a test command.
- ④ When status code H3 is indicated, it may be cleared by test command 14.

**(2) Status code**

Status codes will be displayed on the copy number display window in the manner shown.

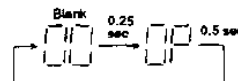
- ① CH, L1, L3, L5, H2, H3, H4, U1, U2, U3, EE



- ② PC, P (Turn on), EL, EU

Always displayed as:

- ③ P (Turn on and off)



Status	Trouble symptom
L1	<p>Mirror base feed trouble</p> <ul style="list-style-type: none"> <li>• If the mirror home position sensor (MHPS) did not turn off within one second after the start of the mirror.</li> <li>• If the mirror base forward movement was not completed within ten seconds after the start of the mirror base.</li> <li>• If the mirror base was not on the MHPS position when the mirror base started to move forward during copying.</li> </ul>
L3	<p>Mirror base return trouble</p> <ul style="list-style-type: none"> <li>• If the MHPS did not turn on within six seconds after the mirror base started to return.</li> </ul>
L5	<p>Magnification rated trouble (lens, No.4/5 mirror)</p> <ul style="list-style-type: none"> <li>• If it did not move to the given location within fifteen seconds after the lens motor started to operate.</li> </ul>
H2	Open heat roller thermistor
H3	Heat roller irregularly high temperature
H4	<p>Heat roller irregularly low temperature</p> <ul style="list-style-type: none"> <li>• If the heat roller temperature did not reach the prescribed temperature within the given time after the start of the heat roller warmup operation.</li> <li>• If an irregularly low temperature was met after reaching the prescribed temperature.</li> </ul>
U1	Low memory backup battery voltage
U2	Backup memory counter sumcheck error
U3	<p>AE sensor trouble</p> <ul style="list-style-type: none"> <li>• If the AE sensor output voltage did not change in regard to the copy lamp voltage in test command 47.</li> </ul>
EE	<p>TCS (Toner control sensor) input trouble</p> <ul style="list-style-type: none"> <li>• The TCS level was obtained and stored in the RAM by the test command 25, but the value obtained is out of the limits.</li> </ul>
EU	If the TCS input voltage by test command 25 is above the limit.
EL	If the TCS input voltage by test command 25 is under the limit.
CH	DV unit not installed or poor connector insertion.
PC	Personal counter not installed for the machine programmed for the personal counter.
P (blink)	During the time cassette feed or multi-bypass stacker is used, if the PPD (paper entry sensor) failed to turn on (paper empty or misfeed) within the given time after the paper feed solenoid (CPFS, MPFS) have turned on.
P	If the cassette was not installed on its given location.