

ADVANCED MULTIFUNCTION SOLUTIONS FOR TODAY'S BUSINESS



SUPER
GB

DOCUMENT COMMUNICATION SYSTEM

NETWORK
CAPABLE

Fast. Sophisticated.
Flexible.



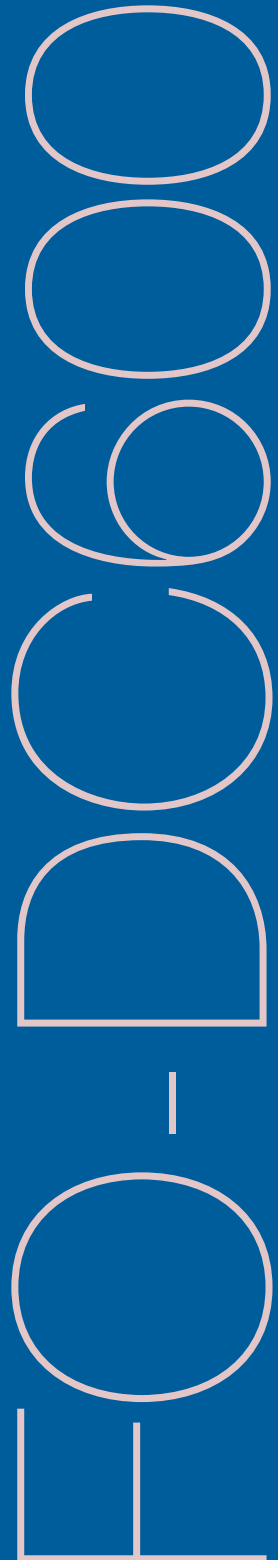
SHARP[®]

The new Sharp FO-DC600 Super G3 Document Communication System delivers everything you need in a high-volume fax—and so much more.

The Sharp FO-DC600 Super G3 Document Communication System is an incredibly smart, high-volume MFP solution for today's business. Powered by a speedy 16 page-per-minute engine, the FO-DC600 is completely modular—enabling you to add versatile options as your business needs evolve. The FO-DC600's broad range of multifunction solutions will make you more productive than ever with advanced network scanning, network printing, web-based management, and remote diagnostics. And with Sharp's integrated software, sophisticated faxing has never been so easy.

The FO-DC600's robust feature set includes Super G3 modem technology, JBIG compression, dual line capability, and more. Innovative features include an easy-to-read 4.7" tilting LCD status display, flash memory backup, and 40 personal auto-dial phone books that minimize manual dialing. The standard 750-sheet paper capacity can easily accommodate heavy volume, and can be expanded to 1,250 sheets. And with 16 MB standard flash memory (upgradeable to 24 MB), the FO-DC600 can easily grow as your business needs change.

The new FO-DC600 Super G3 Document Communication System. The smart solution for high-volume faxing—and so much more.



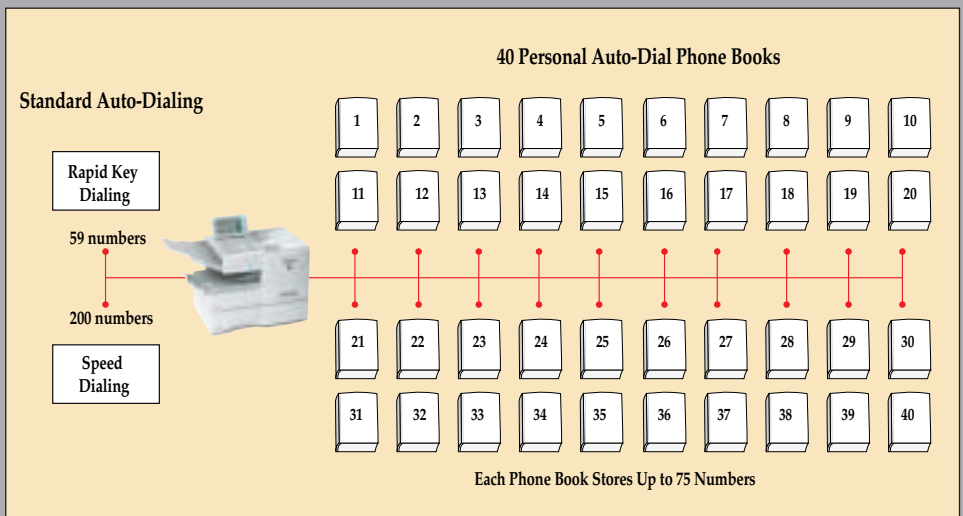
at a glance



- Super G3 33.6 Kbps Modem
- 2-Second Transmission Time*
- 1.3-Second Quick Scan
- 400 dpi Ultra-fine Transmission
- 16 MB Flash Memory (stores approximately 1000 pages*); Upgradeable to 24 MB (stores up to 1500 pages*)
- Large 4.7" Tilting LCD Status Display
- 750-Sheet Standard Paper Capacity
- 50-Sheet Automatic Document Feeder
- 10" Scanning Width
- Duplex Scanning
- Dual Access
- 16 Page-Per-Minute Print Speed
- Document Memory Backup
- 59 One-Touch Rapid Dials
- 200 Coded Speed Dials
- 40 Personal Auto-Dial Phone Books with a Storage Capacity of up to 75 Numbers in Each
- Serial Broadcasting to 279 Locations/ Personal Auto-Dial Phone Books up to 74 Additional Locations per Book

Advanced Auto-Dialing delivers increased productivity

With the most advanced dialing capabilities in its class, the FO-DC600 Document Communication System is a true performer. In addition to 59 rapid dial (one-touch) keys and 200 speed dial (abbreviated) codes, the FO-DC600 also offers 40 personal auto-dial phone books that enable users to store up to 75 numbers in each, for a total of 3,000 additional numbers. Busy offices that have several departments using the same FO-DC600 can assign a personal auto-dial phone book to each of them, which is easily accessed by a PIN number. With all this built-in auto-dialing efficiency, you'll never have to manually dial a number again!

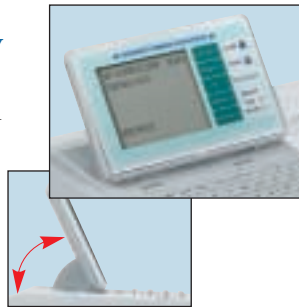


With amazing speed and high-performance features, the new Sharp FO-DC600 Super G3 Document Communication System can handle even the busiest workgroups.

NEW!

LARGE, EASY-TO-READ 4.7" TILTING STATUS DISPLAY

The FO-DC600 Document Communication System features an ergonomic 4.7" tilting LCD status display to make reading easier. And, with a user adjustable viewing angle of up to 65 degrees, the status display can be easily positioned for optimum clarity.



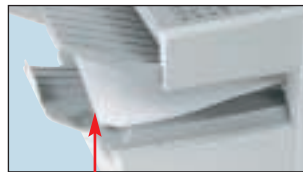
EXPANDABLE PAPER CAPACITY

The Sharp FO-DC600 Super G3 Document Communication System comes standard with a 750-sheet paper supply that can be easily expanded to 1,250 sheets with the optional 500-sheet paper drawer. And, with letter/legal size adjustability in either tray, the FO-DC600 can easily meet the needs of busy offices and workgroups.



EFFICIENT FACE-DOWN DELIVERY

The FO-DC600 engine design delivers all received documents face down. This means multiple page fax receptions are always printed in the correct order, so there's no need to reshuffle the pages when you retrieve them from the exit tray.



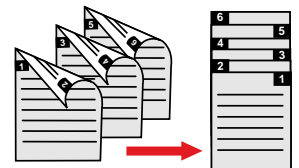
Face-down delivery

FLASH MEMORY PROVIDES RELIABLE DOCUMENT STORAGE

Sharp's flash memory ensures that your documents will be stored safely in the event of a power failure. The FO-DC600 comes standard with 16 MB of flash memory, which can store up to 1,000 pages.* As your business needs grow, you can expand the memory to up to 24 MB, for a total of up to 1,500 pages.*

TIME-SAVING DUPLEX SCANNING

Standard duplex scanning allows users to easily transmit two-sided documents—without having to make a trip to the copier to first separate the pages.



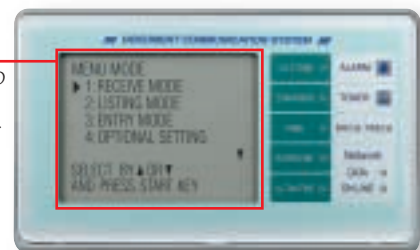
OPTIONAL DUAL LINE KIT **NEW!**

Get the power of two Super G3 facsimiles with the economy of a single unit. With the addition of the optional Dual Line Kit, the DC-600 can simultaneously transmit and receive over two phone lines for added efficiency. With reduced broadcast times, minimized busy signals on incoming faxes, and faster faxing of pending transmissions, the FO-DC600 can handle the busiest offices and workgroups with ease.

USER-FRIENDLY INTERFACE

Operating and programming the FO-DC600 is easy and predictable. With the large 4.7" LCD status display and logically arranged keypad and menus, you'll know how to use the FO-DC600 in minutes.

The large, 4.7" LCD screen displays up to eight lines of text. And since it tilts up to 65 degrees, the FO-DC600 is easy to read at almost any angle.



*Based on ITU-T Test Chart #1 in standard resolution.

Innovative modularity makes it easy to add functionality as your business needs evolve.

The new Sharp FO-DC600 Document Communication System won't let you down—even if your workflow requirements change. Designed to grow with your business, you can easily transform the FO-DC600 into a complete multifunction solution that delivers network scanning, network printing, web-based management, and advanced diagnostics. And with Sharp's integrated software, adding these efficient options has never been easier.



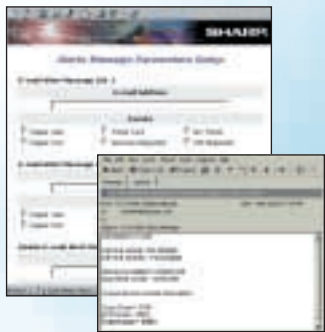
NETWORK SCANNING With Scan to Desktop, Scan to E-mail, and Scan to FTP, you can send your documents across the network—or across the world—quickly and easily. Includes Sharpdesk™ document management software.



WEB-BASED MANAGEMENT With an easy-to-use interface, the FO-DC600 Home Page offers scan and fax destination management, e-mail status notification, remote diagnostics, device configuration, and more.



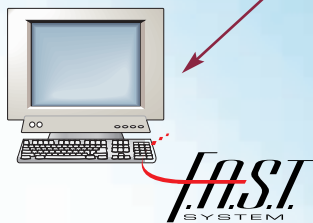
NETWORK PRINTING Transform the FO-DC600 into a 16 ppm, 600 dpi network laser printer with the Network Printing Expansion Kit.



REMOTE E-MAIL DIAGNOSTICS With Remote E-mail Diagnostics (R.E.D.) users, administrators, or Sharp authorized service providers can automatically receive E-mail messages regarding specific notifications from the FO-DC600—keeping your workflow moving.



PRINTER ADMINISTRATION UTILITY Designed for network administrators, Printer Administration Utility (PAU) enables you to manage all SNMP-compliant printers on the network, right from your desktop.



LAN-BASED REMOTE MANAGEMENT With F.A.S.T. (Facsimile Automated Service Technology) Remote Diagnostics System, your authorized Sharp dealer can monitor and diagnose potential problems right over the Internet—minimizing costly downtime.



PRINTER STATUS MONITOR A utility that enables users to view the FO-DC600 network printer conditions through an easy-to-use graphical interface. It even notifies you when your job is complete!

FO-DC600 KEY FEATURES

- Super G3
- Document Memory Backup (Flash)
- Duplex Scanning
- 400 dpi Ultra-fine Transmission/Reception
- 59 One-Touch (Rapid) Dials
- 200 Abbreviated (Speed) Dials
- 40 Personal Auto-Dial Phone Books; 75 Numbers Each
- 4.7" Tilting LCD Status Display Tilts 10 to 65 Degrees
- Standard Group Dialing Up to 59 Groups, 258 Locations/Personal Auto-Dial Phone Books up to 74 Additional Locations per Book
- Standard Polling up to 279 Locations/Personal Auto-Dial Phone Books up to 74 Additional Locations per Book
- Standard Serial Broadcasting to 279 Locations/Personal Auto-Dial Phone Books up to 74 Additional Locations per Book
- 59 Program Keys
- Confidential Transmission/Reception (10 mailboxes)
- Chain Dialing
- Anti-Junk Fax (50 locations)
- Department Codes (30)
- Telephone-Billing Codes (up to 9 digits)
- Distinctive Ring Detection (DRD)
- Batch Transmission (any rapid dial key; up to 59 jobs)
- Auto Reduction Printing
- Print Smoothing
- Quick On-Line
- Automatic Cover Sheet Insertion
- Dual Access
- Flash ROM Updates from Built-in Port
- Auto Cassette Switching
- Automatic Fax Separator Page
- Verification Stamp (optional)

SPECIFICATIONS

Applicable Telephone Line:	Public Switched Telephone Network (PSTN)	LAN Interface Expansion Kit FO-LN1 (optional)	
Compatibility:	ITU-T G3	Operating System:	Windows® 98/ME/2000/NT4/XP
Configuration:	Half-duplex desktop transceiver	Protocol:	TCP/IP
Compression Scheme:	MH, MR, MMR, JBIG, Sharp special	Type:	10/100 baseT
Memory Size:	16 MB Flash Memory (approximately 1000 pages ¹) includes Document Memory backup; upgradeable to 24 MB (approximately 1500 pages ¹)	Network Scanner Expansion Kit FO-NS2 (optional)²	
Modem Rate:	33,600 bps with auto fallback ¹	Scan Resolution:	400 dpi (true optical)
Transmission Time:	2 seconds per page ¹	Data Format:	PDF, TIFF
Scan Speed:	1.3 seconds per page	Document Management Software:	Sharpdesk
Print Speed:	16 pages per minute	OCR:	Included with Sharpdesk software
Resolution in Text Mode:	Standard: 200 x 100 dpi (100 lines/inch) Fine/Halftone: 200 x 200 dpi (200 lines/inch) Super-fine: 200 x 400 dpi (400 lines/inch) Ultra-Fine: 400 x 400 dpi (400 lines/inch)	Scan to E-mail:	Standard
Recording System:	Laser	Scan to Desktop:	Standard
Reception Modes:	Auto/Manual	Scan to FTP:	Standard
Effective Scanning Width:	10.0 inches	Network Printing Expansion Kit FO-NP1 (optional)³	
Effective Recording Width:	8.0 inches	Print Speed:	16 ppm
Paper Capacity:	750 letter/legal pages (adjustable cassette) Expandable to 1,250 sheets with optional 500-sheet letter/legal drawer	Print Resolution:	600 dpi
Paper Stack Capacity:	200 sheets	Printer Description Language:	PCL6/PCL XL
Input Document Size:	• Width: 5.8" to 11" (148 mm to 280 mm) • Length: 5.0" to 19" (128 mm to 432 mm)	Fonts:	45 outline fonts
Automatic Document Feeder:	50 sheets maximum	Memory:	16 MB; 144 MB maximum
LCD Display:	4.7" QVGA screen 320 x 240 dpi	Accessories & Options	
Halftone (grayscale):	64 levels	500-sheet Paper Drawer:	FO-CS1
Copy Function:	Single/Multi-copy/Sort-copy (99 copies/page)	8 MB Flash Memory:	FO-8MK
Power Requirements:	120 V AC, 60 Hz	LAN Interface Kit:	FO-LN1
Remote Fax Management:	FA.S.T. PSTN-based remote diagnostics system FA.S.T. LAN-based remote diagnostics system ²	Network Scanner Expansion Kit:	FO-NS2
Dimensions:	21.5"(W) x 16.2"(D) x 17.0"(H)	Network Printer Expansion Kit:	FO-NP1 ³
Weight:	48.5 lbs.	Dual Line Kit:	FO-60DL ³
		Verification Stamp:	FO-45VS
		Deluxe Cabinet:	FO-44ABD
		Sharp Genuine Supplies for the FO-DC600	
		Toner Cartridge:	FO-50ND
		Drum Cartridge:	FO-47DR

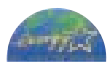
Design and specifications subject to change without notice.

Sharp is a registered trademark of Sharp Corporation. All other trademarks are property of their respective holders.

¹Based on ITU-T Test Chart #1 in standard resolution. Actual transmission time will vary based on line conditions.

²Requires FO-LN1 LAN Interface Expansion Kit.

³FO-NP1 and FO-60DL cannot be used in conjunction.



As an ENERGY STAR® Partner, SHARP has determined that this product meets the ENERGY STAR® guidelines for energy efficiency.



Sharp Electronics Corporation
Sharp Plaza, Mahwah, NJ 07430-1163
1-800-BE-SHARP
www.sharppusa.com

SHARP
be sharp™