

SHARP

FO-5800

Super G3



SUPER G3 PLAIN PAPER LASER FAX



Improving Upon Excellence

SHARP

FO-5800 FACSIMILE

Accelerate your business with the fast Super G3 FO-5800



More Speed. More Power. More Features. And More Value. The new Sharp FO-5800 Super G3 Plain Paper Laser Fax delivers the most to your demanding office environment. With Sharp's award-winning reliability, innovative technology and superior performance, the Sharp FO-5800 is powered by a 33.6 Kbps modem—the fastest available fax modem in the market today. With its large paper capacity, fast scan and print speeds, outstanding resolution and enhanced memory, the FO-5800 is truly a productive office tool. Yet with all this power and functionality, this efficiency builder was designed for ease of use with innovative, yet easy to use functions including a convenient fax separator—which automatically inserts colored sheets between incoming faxes.

The Sharp FO-5800 demonstrates Sharp's commitment to improving people's lives through technology and innovation. The user-friendly control panel guides you through innovative features and programmable functions resulting in minimal time spent at the fax machine, allowing you to focus on other business. Productivity has never been so simple!

Performance that delivers maximum office productivity

Rapid Rates

- 33.6 modem transmits faxes at an incredible 2 seconds per page*
- 2-second scan speed quickens large document transmissions
- Fast 8 ppm print speed

Image Quality at its Best

- Crisp, laser quality with 600 dpi output (with the optional print driver)
- Plain paper convenience lets users quickly file, mark or re-transmit received documents
- 64 halftone levels
- Accurate, clear transmissions with the choice of sending in normal, photo or fine modes

Enhanced Expandable Memory

- Standard 2MB memory (approximately 120 pages)
- Memory expandable to 5MB to store up to 300 pages
- Flash memory backup allows unlimited document storage in event of power loss

Delivering more **Features,** **Power** and **Speed** — for **higher Productivity than Ever Before**

Faster Graphics Transmission with JBIG Compression

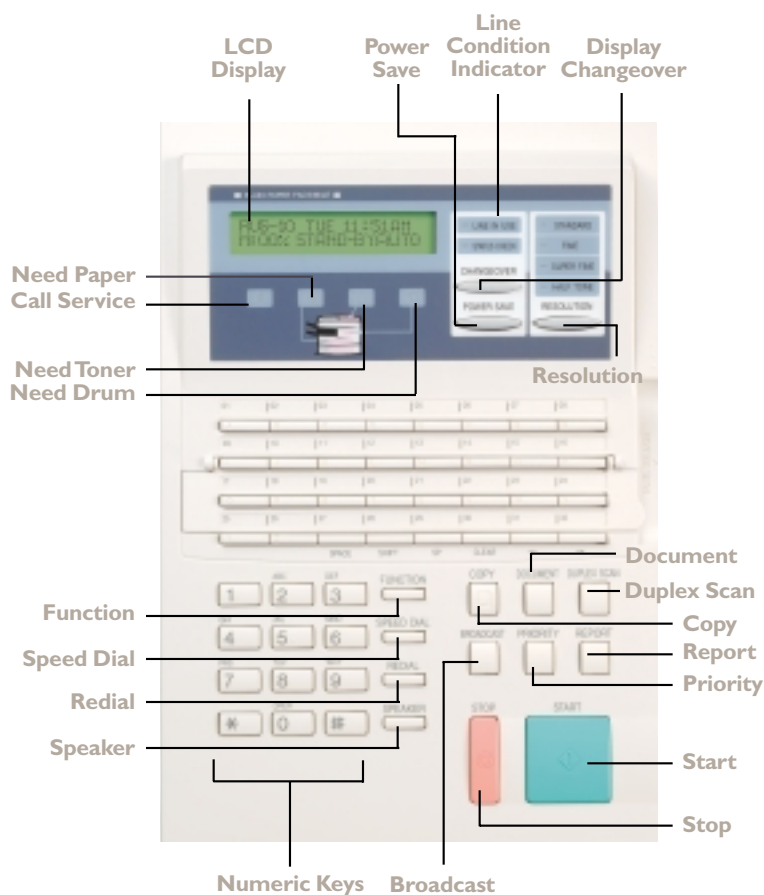
- Advanced feature allows for the highest level of compression
- Ideal when sending heavy graphics or pictures
- JBIG compression increases speed of transmissions to 2 seconds per page*

Automatic Dialing Ease

- 48 one-touch rapid dial numbers
- 100 coded speed dial numbers

Access fast, efficient features with the

EASY-TO-FOLLOW CONTROL PANEL



Superior 1,250-Sheet Paper Capacity for Large Volume Faxing

- One standard letter/legal adjustable 250-sheet paper tray
- Two standard 500-sheet paper trays
- Standard 50-sheet automatic document feeder



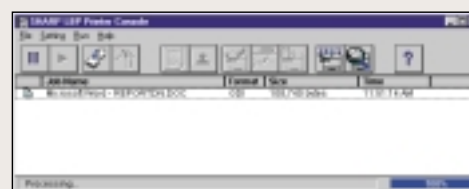
With its large standard paper capacity of 1,250 sheets, the FO-5800 is ready for busy high-volume needs.

Optional Laser Printing

- The optional print driver transforms the FO-5800 into a 600 dpi laser printer and even offers animated directions for changing toner and supplies.



The optional print driver and software transforms the FO-5800 into a connected laser printer.



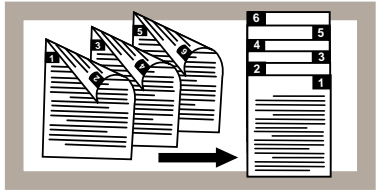
The optional print driver on the FO-5800 has user friendly screens that allow a wide range of options and information.

Innovative Fax Separator Feature

- Standard fax separator inserts colored sheets between incoming faxes for ease of distribution
- Eliminates multiple faxes being incorrectly delivered to top recipient
- Increases productivity by decreasing time spent sifting through a stack of faxes

True Duplex Scanning Saves Time

- Standard duplex scanning lets users quickly and efficiently send two-sided documents—without a trip to the copier to copy each side first. The FO-5800 scans both sides and then sends them in the proper order.



Easy Operation

- Supply replacement is quick and easy with color-coded supplies
- Functions are easy to program
- User-friendly control panel is simple to operate

F.A.S.T. (Facsimile Automated Service Technology)

- Sharp's proprietary remote fax management system automatically connects the FO-5800 to your authorized Sharp dealer to alert for low supplies, and even enables technicians to program functions or diagnose and solve problems right over the fax line.



Besides showing the status of the FO-5800, the print driver software provides animated instructions for everything from adding paper to changing toner and drum cartridges!

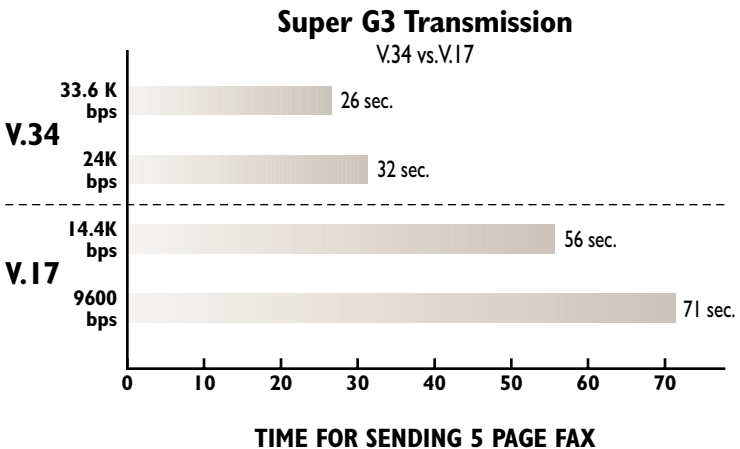
with **Super G3** Technology



ACCELERATE YOUR BUSINESS WITH SUPER G3

The FO-5800 is equipped with standard Super G3 technology (V.34-ITU-T), the latest transmission standard. Super G3 technology offers many advantages to make your business more efficient than ever.

- Modem speeds of up to 33,600 bps*
- Increased transmission speeds to send a page in just 2 seconds*
- V.8 handshake which reduces initial call negotiation time to 6 seconds
- Reduced time between pages to only one second



FO-5800

PRODUCT SPECIFICATIONS

Applicable Telephone Line	Public Switched Telephone Network (PSTN)
Compatibility	ITU-T G3
Configuration	Half-duplex desktop transceiver
Compression Scheme	MH, MR, MMR, JBIG, Sharp special
Memory Size*	2MB (approx. 120 pages) includes Flash Memory backup; expandable to 5MB (approx. 300 pages)
Modem Rate*	33,600 bps with auto. fallback
Transmission Time*	Approx. 2 seconds per page
Scan Speed	2 seconds per page
Print Speed	8 pages per minute
Print Resolution	600 dpi (with optional print driver)
Resolution in Text Mode	Super Fine: 400 lines/inch Fine/Halftone: 200 lines/inch Standard: 100 lines/inch
Recording System	Laser
Reception Modes	Auto/Manual
Effective Scanning Width	10.1 inches
Effective Recording Width	8.0 inches
Paper Capacity	1,250 pages Letter or legal (adjustable) in one 250 sheet tray; letter only in two 500 sheet trays
Paper Stack Capacity	200 sheets
Input Document Size	Automatic Feeding: • Width 5.8" to 11" (148mm to 280mm) • Length 5.0" to 17" (128mm to 432mm) Manual Feeding: • Width 5.8" to 11" (148mm to 280mm) • Length 5.0" to 39.4" (128mm to 1000mm)
Automatic Document Feeder	50 sheets max.
Halftone (gray scale)	64 levels
Copy Function	Single/Multi-copy/Sort-copy (99 copies/page)
Power Requirements	120 V AC, 60 Hz
Remote Fax Management	F.A.S.T.
Dimensions	25"(W) x 16.25"(D) x 21"(H)

Accessories & Options	
3MB Memory Upgrade	FO-3MK
Print Driver (compatible with Windows 95, 98 & NT) [includes software, parallel port]	FO-471F
Verification Stamp	FO-45VS
Deluxe Cabinet	FO-47ABD
Standard Cabinet	FO-47ABS

Sharp Genuine Supplies for the FO-5800

Toner cartridge	FO-47ND
Drum cartridge	FO-47DR

more features

- Super G3 33.6 Kbps modem
- 2MB memory (stores approx. 120 pages); Upgradable to 5MB (stores up to 300 pages)
- Flash memory backup
- High quality 600 dpi resolution printing with optional print driver
- Duplex Scanning
- Fax Separator feature
- 2-second transmission time*
- 2-second scan speed
- 8 page per minute print speed
- 48 one-touch rapid dials
- 100 coded speed dials
- JBIG compression scheme
- 50-sheet automatic document feeder
- 1,250-sheet paper capacity
- 64-level halftone
- Chain Dialing
- Anti-Junk Fax (50 locations)
- Serial Polling (168 stations)
- Secure telephone-billing code
- Relay broadcasting
- Confidential transmission/reception
- Verification Stamp (optional)
- Department Usage (30 departments)



As an ENERGY STAR® partner, SHARP has determined that this product meets the ENERGY STAR® guidelines for energy efficiency.

Distributed by:

*Based on ITU-T Test Chart #1 at standard resolution in Sharp special mode, excluding time for protocol signals (i.e., ITU-T phase C time only). Sent at 33.6 Kbps. Transmission speeds will vary based on line type and conditions.

Specifications Subject to Change Without Notice



Sharp Plaza, Mahwah, NJ 07430-2135
1-800-BE-SHARP
www.sharp-usa.com

SHARP
FROM SHARP MINDS
COME SHARP PRODUCTS™

FAD-3107